

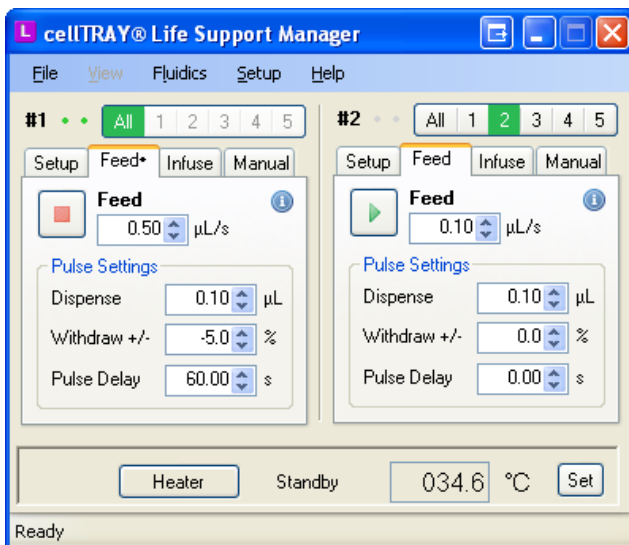
cellTRAY Fluidics System CT-2000F Solution
<ul style="list-style-type: none"> <li>• Fluidics Controller</li> <li>• Manifold with Heater Assembly</li> <li>• Manifold Base Assembly</li> <li>• Custom Tubing</li> <li>• cellTRAY Life Support Manager Software</li> <li>• cellTRAY dish – 25 units</li> <li>• cellTRAY slide – 3 units</li> <li>• USB cable</li> <li>• Travel Case</li> </ul>



300 µm cellTRAY CT-2301 Slide Properties	
Size:	1 " x 3" x 1.3mm
Material:	Borosilicate Glass / Silicon
Cell Lifetimes:	> 48 Hours <sup>i</sup>
Total Wells:	112
Well Depth	220 µm
# Regions	14
# Wells / Region	8
Well Volume	18 nL
Channel Volume	1.6 µL
Total Region Volume	1.6 µL
Total Volume	31.6 µL

cellTRAY Life Support Manager Software Computer Requirements
<ul style="list-style-type: none"> <li>• 800 MHz Pentium III or equivalent</li> <li>• 512 MB RAM (memory)</li> <li>• 100 MB Hard Disk Drive</li> <li>• 1x USB 2.0 port</li> <li>• Windows XP or Vista</li> </ul>

Microscope Pre-Requisites
<ul style="list-style-type: none"> <li>• Inverted (10x objective)</li> <li>• Well plate holder</li> <li>• Regulated CO<sub>2</sub> supply (optional)</li> </ul>



Manifold with Heater Assembly
<ul style="list-style-type: none"> <li>• Temperature Range from 20°- 40°C</li> <li>• 0.1°C Temperature Stability</li> <li>• 10 isolated Regions</li> <li>• Well plate form factor</li> </ul>

Fluidics Controller
<ul style="list-style-type: none"> <li>• 0.07 µL Step Resolution</li> <li>• 0.1 – 50 µL/sec.</li> <li>• Two paired pump sets</li> <li>• Controlled by cellTRAY Life Support Manager</li> </ul>

<sup>i</sup> Using the cellTRAY Fluidics System CT-2000F